

# Actuation of Universal ZeoCool



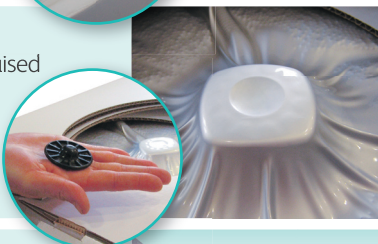
**IMPORTANT:** ZeoCool boxes should be stored at room temperature for a minimum of 4 hours before actuating to ensure optimum performance

## STAGE 1

1 Ensure the ZeoCool is flat on the ground, in an upright position with the thermostat flap and air holes to the top. Open the box to locate the starter disc and reveal the raised actuator.



2 Hold the starter disc in the palm of your hand with the raised section facing outwards.



3 Place the disc on top of the actuator and push down firmly to fully depress the central release. You should hear a bang. You can now discard the disc.



4 If you did not hear a bang, grip the actuator (without the starter disc) using the palm of your hand, push down and twist clockwise until the central release is depressed and you hear a bang.



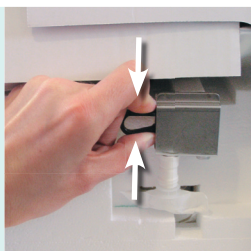
5 Once activated the actuator will sink and the foil will tighten.



6 Close the box lid and open the side flap to reveal the thermostat.



7 Remove the plastic safety clip from the thermostat by squeezing firmly on the exposed edge and pull to the left until completely detached. \*



**\*NOTE: Medium boxes have two thermostats, located on opposite sides of each other. Repeat the process.**

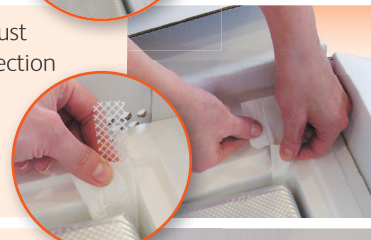
8 Discard the clip(s). The thermostat(s) is now activated. Close and secure the flap(s).

## STAGE 2

1 Turn the box over and open it to expose the EPS lid. Remove this lid to access the heater exhaust and payload area.



2 Take hold of the heater exhaust ribbon and tear off the top section at the notch. This will expose the inner mesh\*\*



3 Place the mesh within the cutout channel directing it towards the outer box air vent.\*\* Now place the EPS lid back in and note the current time.



**\*\*NOTE: Medium boxes have two heater exhausts located on opposite sides of each other. Repeat the process.**

**IMPORTANT:** ZeoCool payload area cannot be used for 30 minutes to allow the temperature to reach below 8°C

4 After 30 minutes your ZeoCool is ready for use. Remove EPS lid, you will notice the silver payload area feels cold.



5 Load your product into the payload area, place the EPS lid back into the box and close the outer box securely.



**IMPORTANT:** Never cover the ZeoCool box air vents, these vents ensure optimum airflow during transportation

## CONTACT US:

Should you require any further information about ZeoCool please contact your SCA Cool Logistics Representative or visit the ZeoCool website – [www.zeocool.co.uk](http://www.zeocool.co.uk)

